



# Georgetown County Resilience Element

1

2

## Overview of SBP



**SBP** is a social impact organization focused on disaster resilience and recovery. We solve challenges by bringing the rigor of business and innovation to drive social impact, create resilient communities, and streamline recovery. To shrink the time between disaster and recovery, SBP takes a detailed and methodical approach — reducing risk, increasing resilience and improving the recovery process — to effect transformational change in the disaster recovery system and restore opportunity and security for people and communities.

Since its founding in 2006 in St. Bernard Parish, Louisiana following the devastation wrought by Hurricane Katrina, SBP has rebuilt homes for more than 3,000 families with the help of 150,000+ volunteers in 14 communities across the U.S. and in the Bahamas. SBP is supported by corporate partners and foundations including UPS, Toyota, Walmart, ATT, Lowes, Farmers Insurance, and Musk Foundation.

### Awards & Accolades

2020, HUD Secretary's Award for Public-Philanthropic Partnerships  
 2018, The Times-Picayune, 300 for 300 New Orleans Tricentennial  
 2018 Social Entrepreneurs of the Year, Schwab Foundation for Social Entrepreneurship  
 2017, Henry C. Turner Prize for Innovation and Excellence in Construction  
 2016, Nominee for CNN SuperHero of the Decade  
 2014 GLG Social Impact Fellow  
 2013, White House Champion of Change  
 2013, Citizen Co-Chair, Inauguration of President Obama  
 2011-12, Tulane University, Urban Innovation Fellowship  
 2010, US News and World Report, Top Ten Socially Innovative Organization  
 2008, CNN Hero of the Year  
 2008, The Advocate, New Orleanian of the Year  
 2008, Manhattan Institute for Policy Research, Social Entrepreneurship Award

2

3

## Project Team



Project Lead: Joe Boyes [jboyes@sbpusa.org](mailto:jboyes@sbpusa.org)

Primary Data Analyst: Leah Blackwood

Primary Planner/Author: Meredith Johns

3

4

## Project Methodology



Phase I: Data Analysis

Phase II: Data Briefing and Feedback

Phase III: Resilience Element Development

4

5

## Phase I



Social Vulnerability Analysis

Composite Community Resilience Index

HAZUS disaster scenario simulations

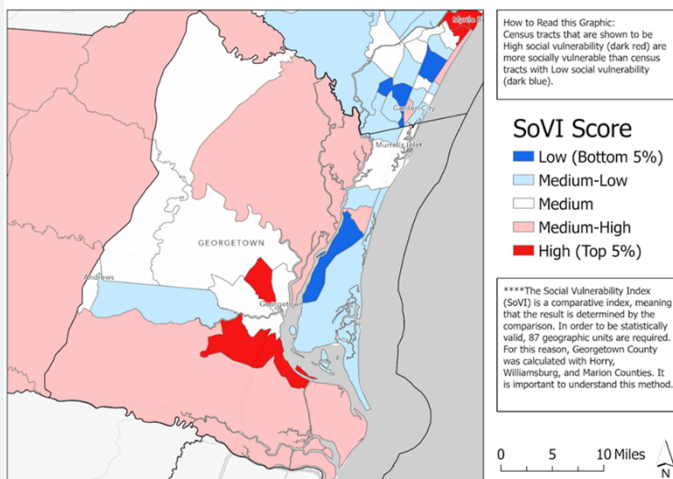
5

6

## SoVI Analysis



Social Vulnerability Index (SoVI): Georgetown County, SC



Relevant Components  
Shaping Social Vulnerability  
in Georgetown County:

1. Race and Socioeconomic Status
2. Ethnicity
3. Age (Elderly)
4. Gender (Female)
5. Nursing Home Residents
6. Housing and Mobility

6

7

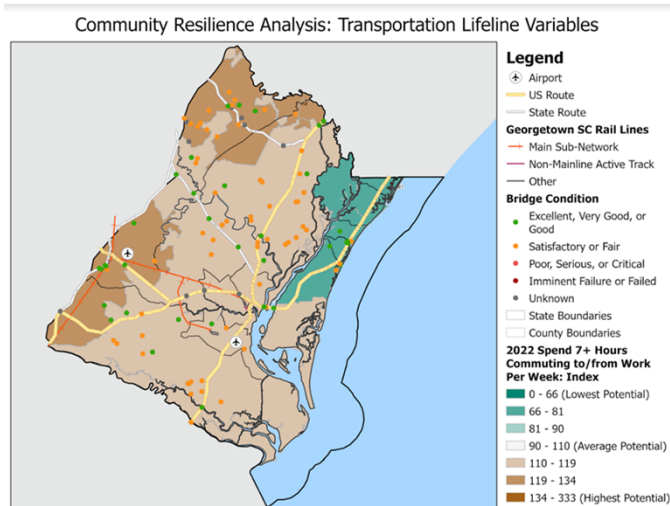
## CCR Index



Goal of CCRI: Combine physical exposure, social vulnerability, and FEMA lifelines into an understanding of resilience at the tract level.

### 9 Variable Categories:

1. Hazardous Materials
2. Safety and Security
3. Food, Water, and Shelter
4. Health and Medical
5. Energy (Power and Fuel)
6. Communications
7. Transportation
8. Natural Hazards & Climate
9. Miscellaneous



7

8

## HAZUS



### 4 Scenarios under consideration:

1. Coastal runner hurricane with wind and storm surge flooding
1. Direct Georgetown County Cat 3 hurricane landfall with significant storm surge, wind, etc. No freshwater flooding for this scenario. Similar to Ian but stronger.
1. Riverine flooding scenario from a hurricane similar to Florence. Strong examination of freshwater flooding hazards.
1. Charleston earthquake, magnitude 7.5.

8

9

## Phase II



Conduct a gap analysis to identify at risk populations

Conduct a briefing to incorporate stakeholder input into the process

Incorporate mitigation, preparedness, response, and recovery elements

9

10

## Phase III



Development of 8 chapter resiliency element for incorporation into the comprehensive plan

Development of local recommendations for actionable resilience factors for implementation

10

11



For additional information on resilience planning services offered by SBP, feel free to contact:

Joe Boyes  
 (803)629-7404  
[jboyes@sbpusa.org](mailto:jboyes@sbpusa.org)

11



Vkubnlgj#wpo h#ehwz hho#givdwhu#og#hfrynu|1

12

12