



1

Resiliency Element – Section 6-29-510

- Consider the potential impacts of flooding or other natural hazards on citizens and the community
- Should be considered in coordination with the relevant jurisdictions adjacent to the county
- Begin examining the flood potential or natural hazards and must incorporate resiliency planning in the next 5 or 10-year comprehensive plan review.

2

Creekfront homes on Pawleys Island.



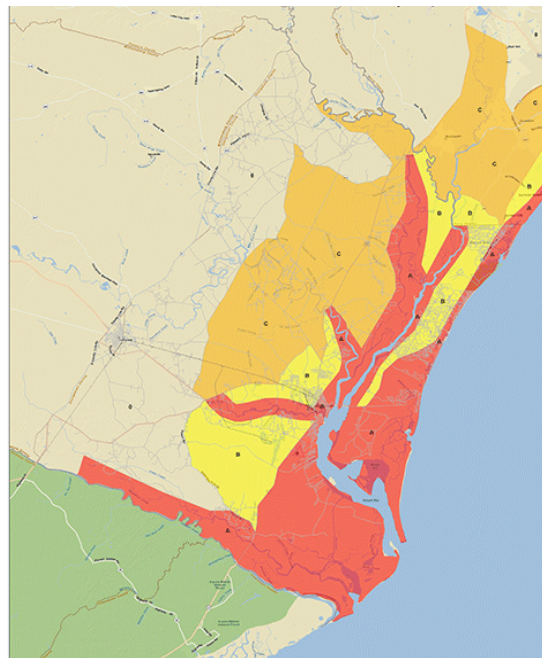
Georgetown County

- Located on the coast between Horry and Charleston Counties
- Population: 63,921
- 5.9% growth since 2010
- 814.86 square miles
- Only 3% of Georgetown County exceeds 50 feet in elevation
- 44% of the County is considered wetlands
- 70-80% of the population located within a surge area

3

Georgetown County Surge Map

- Evacuation Zones A, B and C
- Based on storm surge, not wind speed
- Considers both coastal and riverine flooding



4

re·sil·ience -
the capacity to recover quickly
from difficulties; toughness.

5

5

Second sinkhole opens in Georgetown County

Published: Nov. 18, 2011 at 4:37 AM EST | Updated: Nov. 18, 2011 at 11:32 PM EST

Fire destroys seven historic buildings on Front St. in Georgetown

Hurricane Joaquin brings rain, flooding to East Coast

Hurricane Matthew One Year Later: Georgetown County's lessons learned

by Ashley Gooden | Friday, October 6th 2017



Hurricane Florence is about to flood Georgetown, South Carolina. They don't know how bad it will be

by Fred P. Murphy, CNN
Updated 7:13 AM EDT, Tue September 25, 2018

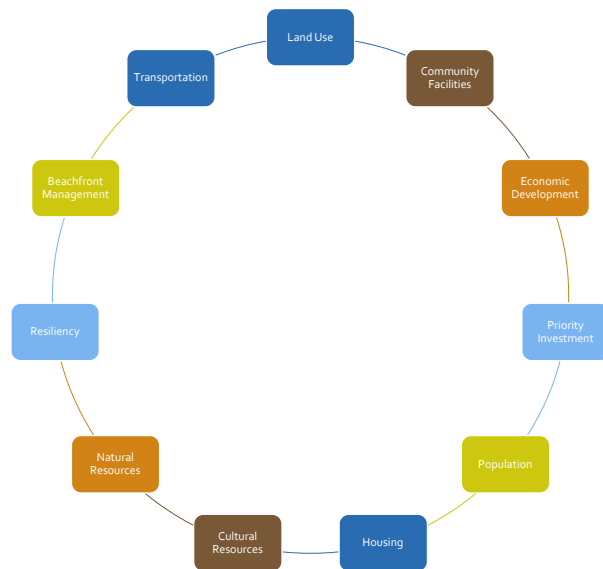
Cyber experts weigh in after Georgetown County ransomware attack

Ian downgraded after making landfall near Georgetown

6

6

Comprehensive Plan



7

Existing Data

- Georgetown County Hazard Mitigation Plan (2019)
- Natural Resource Element (draft)
- Waccamaw Neck Stormwater Master Plan (in review)
- Housing Needs Assessment (2021)
- Land Use Element Survey (2021-22)
- NOAA Sea Level Rise Viewer (<https://coast.noaa.gov/slr/>)

HAZARD MITIGATION PLAN

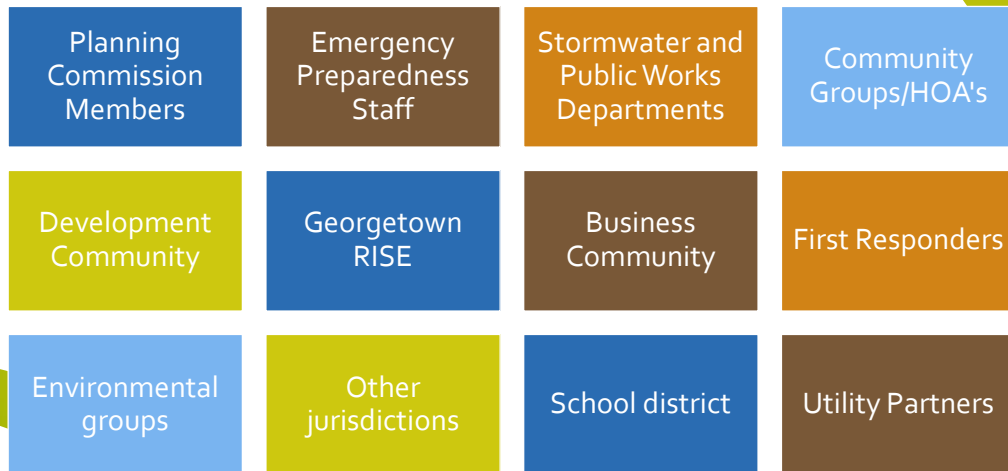


2019

GEORGETOWN COUNTY
CITY OF GEORGETOWN
TOWN OF ANDREWS
TOWN OF PAWLEYS ISLAND

8

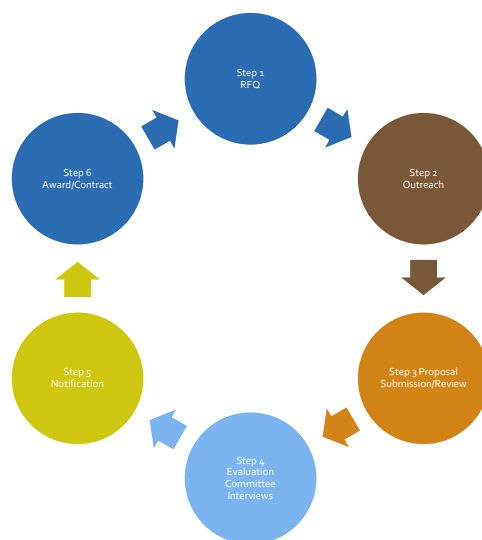
Potential Stakeholders....



9

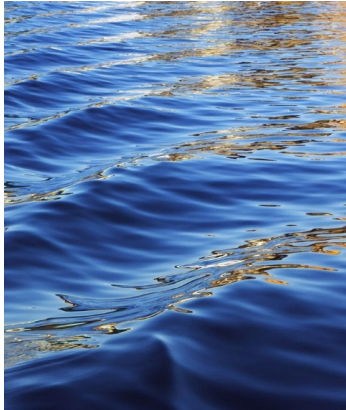


9

Consultant Selection Process



10

10



Holly Richardson

Director of Planning and Code Enforcement
Georgetown County
hrichardson@gtcounty.org