

# COVID-19 Food and Nutrition Resource Roadmap

---

The purpose of the *COVID-19 Food and Nutrition Resource Roadmap* (Roadmap) developed by FEMA is to assist state, local, tribal, and territorial (SLTT) leaders and other recovery stakeholders with navigating some of the challenges, as well as the resources associated with the Coronavirus (COVID-19) pandemic. Specifically, the Roadmap describes how supplemental appropriated funds, in particular under the CARES Act, and certain ongoing annually funded federal programs, can be used to implement potential solutions.<sup>1</sup> Specifically, the Roadmap describes how to use supplemental appropriations and certain ongoing annually funded federal programs to implement potential solutions.

## Navigating the Roadmap

The Roadmap is based on challenges that federal departments and agencies who work directly with SLTT partners in education and COVID-19 pandemic recovery have identified. Although not an exhaustive list, the identified challenges that follow fall within three topic areas:

- Meeting Daily Nutrition Needs;
- Securing the Food Supply;
- Supporting Restaurants and Other Food Outlets.

Each topic area consists of a flowchart of specific challenges, potential solutions, and federal department or agency resources, including federal support and technical assistance (e.g., Figure 1). Federal funding resources are either universal or solution-specific. Universal resources, for purposes of this document, have broad applicability to the solutions presented within the topic area, whereas resources directly linked to specific solutions are limited to the challenge presented.

“The whole of government and the whole of community is involved in the fight against COVID-19. We will prevail, but it will take government, the private sector and individual Americans working together.”

- **Pete Gaynor, FEMA Administrator**

---

<sup>1</sup> In this Roadmap, the resources provided by the U.S. Department of Education (ED) focus on assistance under the CARES Act, and do not include assistance from state-administered formula grant programs with annual appropriations administered by ED. For information on those and other ED assistance programs, please see the information on <https://www.ed.gov/coronavirus>



Although the solutions are general in nature, additional considerations may be necessary to support children who may be at an elevated risk for contracting COVID-19, including those who may have physical, sensory, behavioral, or intellectual disabilities affecting their ability to conform to infection control protocols such as masking, hand washing, or distancing.<sup>2</sup> Additionally, schools may need to consider extra precautions for students, teachers, and staff who may be considered high risk because of known conditions such as respiratory compromise, diabetes, or advanced age. Finally, entities that use federal funds to support COVID-19 relief must ensure that such uses are reasonable, necessary, allowable, and allocable to the federal source program (i.e., resource), whether that program is universal or solution-specific.

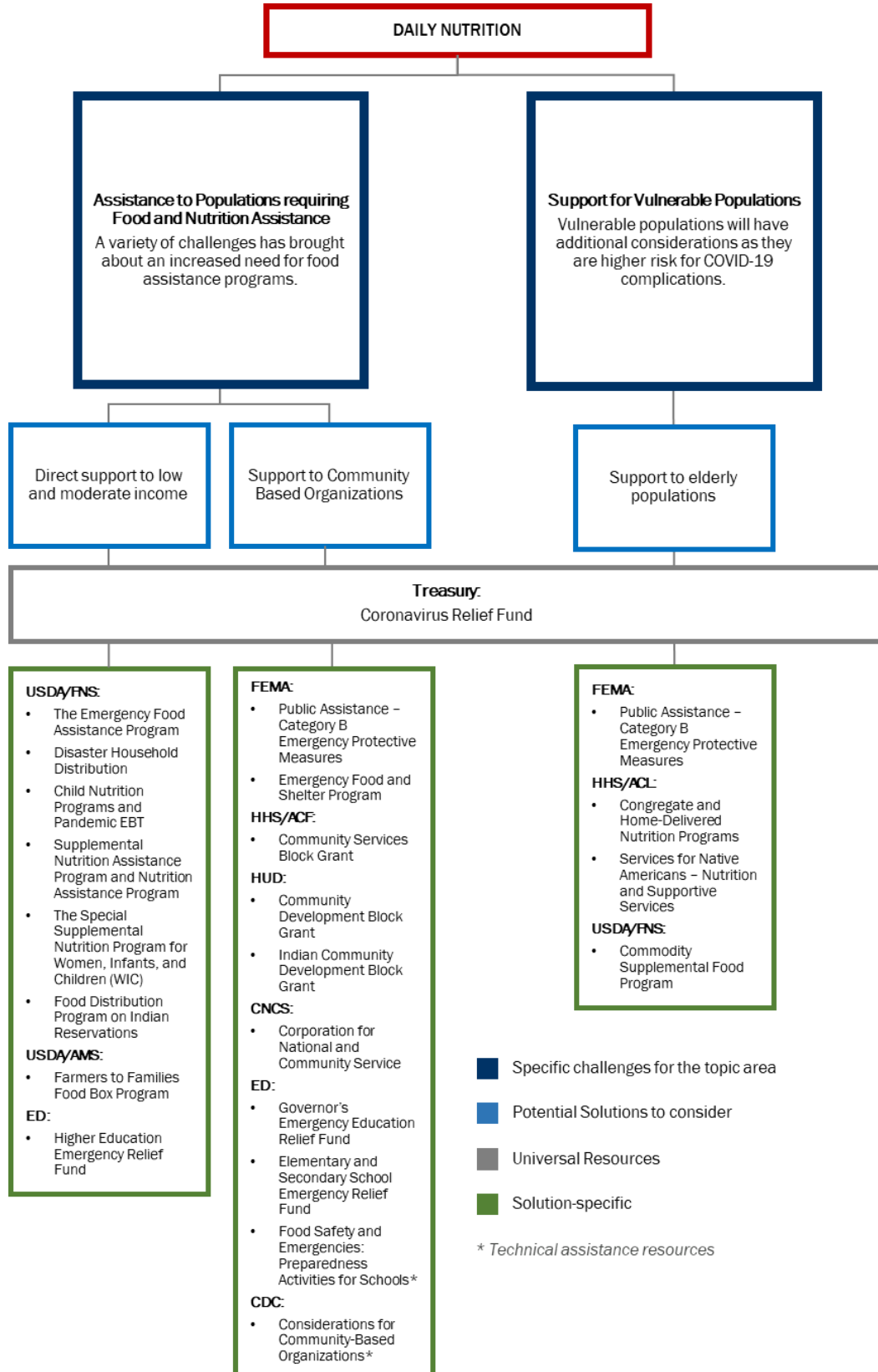
The Roadmap also includes a Funding Index (Index) that provides an overview of resource structure and connection to the identified education challenges. The Index is designed to help SLTT partners navigate resource availability, find opportunities to leverage assistance across federal programs, and avoid potential areas of duplication of benefits. For example, some of the resources, such as the Governor's Emergency Education Relief Fund and Coronavirus Relief Fund, are federal resources allocated to the Governor (i.e., Governor's Emergency Education Relief Fund), or to state and local governments (i.e., Coronavirus Relief Fund), and thus may be subject to state and local decision-making for eligible activities. Other resources are provided directly to educational institutions and have broad flexibility to be used for eligible costs that best fit each educational institution's most critical needs. This information can help inform decisions on how to apply funding to maximize recovery outcomes.

Please note that the information that follows is for general informational purposes only and are compiled with publicly available information or with information provided by sources that are publicly obtained and should be viewed as only a starting point for navigating challenges and available resources. The user should always directly consult the provider of a potential resource (i.e., the respective department or agency administering the federal program) for current program information, as well as to verify whether the user's proposed activities would be allowable under a particular program.

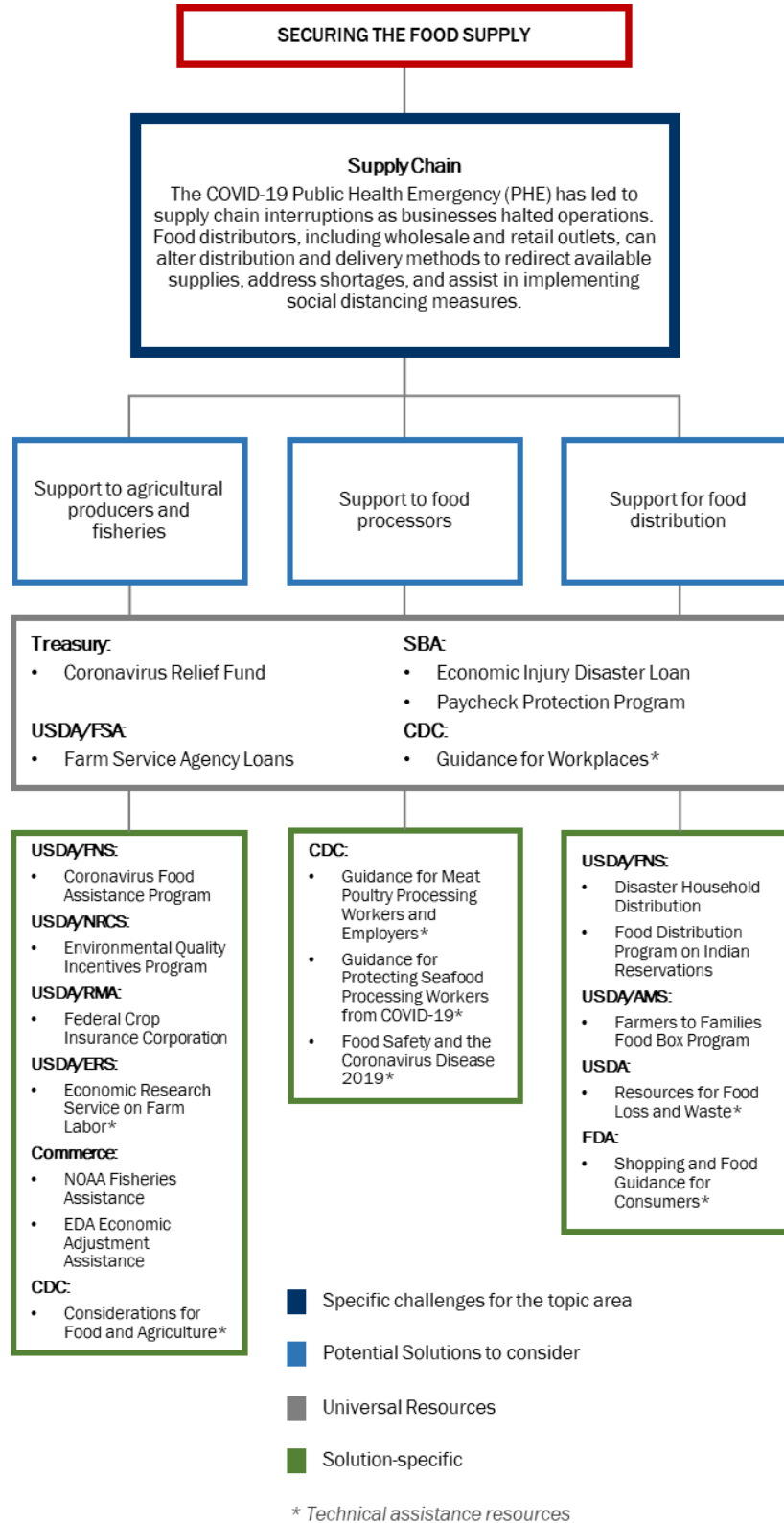
---

<sup>2</sup> Children identified as having a disability may be eligible for services under the Individuals with Disabilities Education Act (IDEA) or Section 504 of the Rehabilitation Act of 1973.

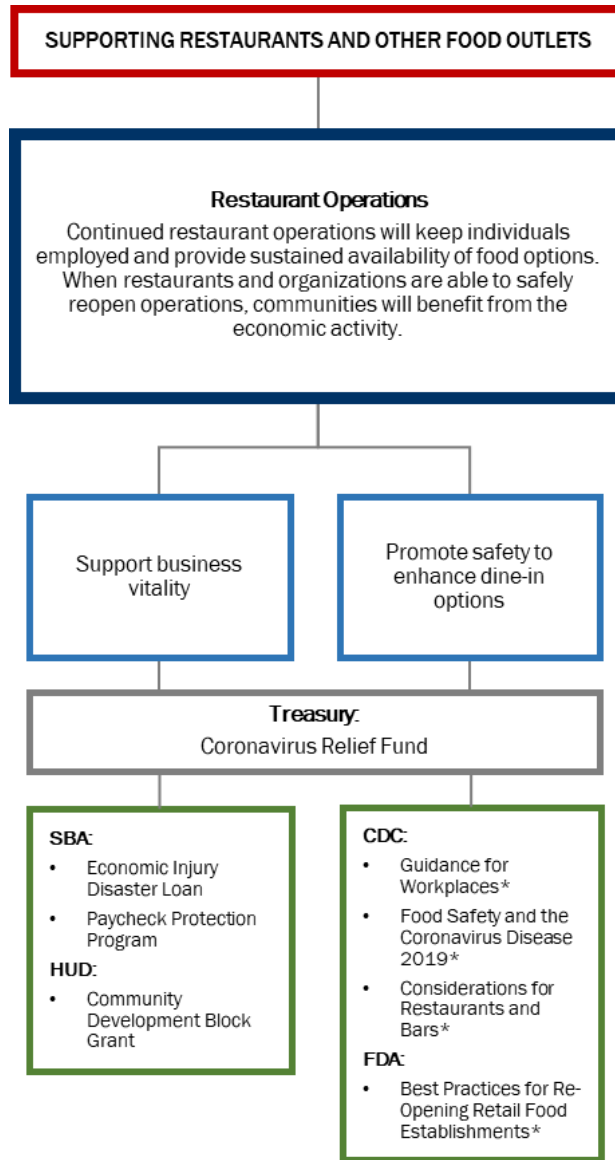
**Figure 1. Daily Nutrition**



**Figure 2. Securing the Food Supply**



**Figure 3. Supporting Restaurants and Other Food Outlets**



- Specific challenges for the topic area
- Potential Solutions to consider
- Universal Resources
- Solution-specific

\* Technical assistance resources

# Funding Index

Program	Program Delivery				Challenges			Additional Information
	Funds to SLTT**	Direct Assistance to Program Providers	Statutory/Regulatory Flexibility Provided	Funding Allocated as of 7/15/20	Daily Nutrition Needs	Securing Food Supply	Supporting Restaurants and Other Food Outlets	Links to Program Websites
Child Nutrition Programs and Pandemic EBT (USDA/FNS)	✓		New Program	✓	✓			<a href="#">USDA Food and Nutrition Service Website</a>
Commodity Supplemental Food Program (CSFP) (USDA/FNS)	✓	✓	✓	✓	✓			<a href="#">USDA Food and Nutrition Service Website</a>
Community Development Block Grant (HUD)	✓		✓	✓	✓		✓	<a href="#">CDBG COVID-19 Website</a>
Community Services Block Grant (CSBG) (HHS/ACF)	✓		✓	✓	✓			<a href="#">CSBG Website; CSBG COVID-19 Information</a>
Congregate and Home-Delivered Nutrition Programs (HHS/ACL)		✓		✓	✓			<a href="#">ACL Nutrition Services Website</a>

\* Items that may provide assistance but are not CARES Act funded.

\*\*State, local, tribal and territorial (SLTT) organizations

COVID-19 Food and Nutrition Resource Roadmap

Program	Program Delivery				Challenges			Additional Information
	Funds to SLTT**	Direct Assistance to Program Providers	Statutory/Regulatory Flexibility Provided	Funding Allocated as of 7/15/20	Daily Nutrition Needs	Securing Food Supply	Supporting Restaurants and Other Food Outlets	Links to Program Websites
Coronavirus Food Assistance Program (CFAP) (USDA/FNS)	✓		New Program	✓		✓		<a href="#">CFAP Website:</a> <a href="#">CFAP FAQs</a>
Coronavirus Relief Fund (Treasury)	✓		New Program	✓	✓	✓	✓	<a href="#">CRF Website:</a> <a href="#">CRF Guidance</a>
Corporation for National and Community Service (CNCS)					✓			<a href="#">CNCS Website:</a> <a href="#">CNCS Covid-19 Website</a>
Disaster Household Distribution (USDA/FNS)		✓	✓	✓	✓	✓		<a href="#">Disaster Household Distribution Website:</a> <a href="#">USDA Food and Nutrition Service Website</a>
Economic Adjustment Assistance (EDA)		✓		✓		✓		<a href="#">EDA COVID-19 Website:</a> <a href="#">EDA COVID-19 FAQs</a>

\* Items that may provide assistance but are not CARES Act funded.

\*\*State, local, tribal and territorial (SLTT) organizations

COVID-19 Food and Nutrition Resource Roadmap

Program	Program Delivery				Challenges			Additional Information
	Funds to SLTT**	Direct Assistance to Program Providers	Statutory/Regulatory Flexibility Provided	Funding Allocated as of 7/15/20	Daily Nutrition Needs	Securing Food Supply	Supporting Restaurants and Other Food Outlets	Links to Program Websites
Economic Injury Disaster Loan (EIDL) (SBA)		✓				✓	✓	<a href="#">EIDL COVID-19 Website</a> ; <a href="#">SBA COVID-19 Programs</a>
Elementary and Secondary School Emergency Relief Fund (ED)			New Program	✓	✓			<a href="#">ESSERF Website</a> ; <a href="#">ESSERF FAQs</a>
Emergency Food and Shelter Program Grant (FEMA)		✓			✓			<a href="#">EFSP Website</a> ; <a href="#">FEMA COVID-19 Fact Sheets</a>
<i>Environmental Quality Incentives Program (USDA/NRCS)*</i>		✓				✓		<a href="#">NRCS Program Website</a>

\* Items that may provide assistance but are not CARES Act funded.

\*\*State, local, tribal and territorial (SLTT) organizations



COVID-19 Food and Nutrition Resource Roadmap

Program	Program Delivery				Challenges			Additional Information
	Funds to SLTT**	Direct Assistance to Program Providers	Statutory/Regulatory Flexibility Provided	Funding Allocated as of 7/15/20	Daily Nutrition Needs	Securing Food Supply	Supporting Restaurants and Other Food Outlets	Links to Program Websites
Farmers to Families Food Box Program (USDA/AMS)		✓	New Program	✓	✓	✓		<a href="#">Farmers to Families Food Box Website</a>
<i>Farm Service Agency Loans (USDA/FSA)*</i>		✓				✓		<a href="#">FSA Farm Loan Programs Website</a>
Federal Crop Insurance Corporation (USDA/RMA)*		✓				✓		<a href="#">RMA Federal Crop Insurance Corporation Website</a> ; <a href="#">RMA COVID-19 FAQs</a>
Food Distribution Program on Indian Reservations (USDA/FNS)	✓		✓	✓	✓	✓		<a href="#">FNS COVID-19 Website</a>
Governor's Emergency Education Relief Fund (ED)			New Program		✓			<a href="#">GEERF Website</a> ; <a href="#">GEERF FAQs</a>
Higher Education Emergency Relief Fund (ED)			New Program		✓			<a href="#">HEERF Website</a>

\* Items that may provide assistance but are not CARES Act funded.

\*\*State, local, tribal and territorial (SLTT) organizations

COVID-19 Food and Nutrition Resource Roadmap

Program	Program Delivery				Challenges			Additional Information
	Funds to SLTT**	Direct Assistance to Program Providers	Statutory/Regulatory Flexibility Provided	Funding Allocated as of 7/15/20	Daily Nutrition Needs	Securing Food Supply	Supporting Restaurants and Other Food Outlets	Links to Program Websites
Indian Community Development Block Grant (HUD)	✓		✓	✓	✓			<a href="#">Public and Indian Housing Website</a>
NOAA Fisheries Assistance (Commerce)	✓			✓		✓		<a href="#">NOAA COVID-19 Website</a>
Paycheck Protection Program (PPP) (SBA)		✓	New Program	✓		✓	✓	<a href="#">PPP Website</a> ; <a href="#">SBA COVID-19 Programs</a>
Public Assistance – Emergency Protective Measures (FEMA)	✓		✓	✓	✓			<a href="#">FEMA PA Website</a> ; <a href="#">FEMA PA COVID-19 Food Distribution Policy</a>
Services for Native Americans – Nutrition and Supportive Services (HHS/ACL)		✓		✓	✓			<a href="#">ACL Services for Native Americans Website</a>

\* Items that may provide assistance but are not CARES Act funded.

\*\*State, local, tribal and territorial (SLTT) organizations

# Technical Assistance

## Daily Nutrition Needs

Community-Based Organizations providing food-related services can review [Considerations for Community-Based Organizations \(CDC\)](#), which provides information on promoting health behaviors, maintaining health environments and operations, and preparing for when someone gets sick.

K-12 schools and school districts can better prepare for food-related emergencies, as well as the role of food services in larger recovery efforts in the Readiness and Emergency Management for School Technical Assistance Center Webinar: [Food Safety and Emergencies: Preparedness Activities for Schools \(ED\)](#).

## Securing Food Supply

The U.S. Food and Drug Administration (FDA) has gathered information and best practices to both industry members and consumers from multiple federal agencies to provide a repository on [Food Safety and the Coronavirus Disease 2019 \(COVID-19\)](#).

FDA offers [Considerations for Food and Agriculture \(FDA\)](#) on prioritization of personal protective equipment, cloth face coverings, disinfectants, and sanitation supplies during the COVID-19 pandemic in the food and agricultural industry.

The Centers for Disease Control (CDC) has prepared extensive [Guidance for Workplaces \(CDC\)](#) on worker safety to prevent the spread of COVID-19 in the workplace. For meat and poultry processing facilities, industry-specific [Guidance for Meat and Poultry Processing Workers and Employers \(CDC and OSHA\)](#) is available on workplace safety in the COVID-19 environment. Likewise, information for [Seafood Processing Workers](#) is available with considerations for both onshore plants and offshore vessels to mitigate and plan for exposures to COVID-19.

[Economic Research Service on Farm Labor \(USDA\)](#) is a database on farm labor issues to help employers and industry players understand the U.S. Agriculture Workforce.

The U.S. Department of Agriculture (USDA) addresses [Food Loss and Waste \(USDA\)](#) issues through its programs, policies and guidance. Specific information is available for farmers, businesses, consumers, schools, donations, and funding.

## Food Outlets and Restaurants

The Centers for Disease Control has prepared extensive [Guidance for Workplaces \(CDC\)](#) on worker safety to prevent the spread of COVID-19 in the workplace.

FDA has gathered information and best practices to both industry members and consumers from multiple federal agencies to provide a repository on [Food Safety and the Coronavirus Disease 2019 \(COVID-19\)](#).

Food establishments can implement [Best Practices for Re-Opening Retail Food Establishments \(FDA\)](#) and review [CDC Considerations for Restaurants and Bars \(CDC\)](#) in reopening and continued operations to ensure safety.

# Acronym and Agency Glossary

<b>ACF</b>	Administration of Children and Families
<b>ACL</b>	Administration for Community Living
<b>AMS</b>	Agricultural Marketing Service
<b>CARES</b>	Coronavirus Aid, Relief, and Economic Security
<b>CDBG</b>	Community Development Block Grants
<b>CDC</b>	Centers for Disease Control and Prevention
<b>CFAP</b>	Coronavirus Food Assistance Program
<b>CNCS</b>	Corporation for National and Community Service
<b>COVID-19</b>	Coronavirus
<b>CRF</b>	Coronavirus Relief Fund
<b>CSAP</b>	Commodity Supplemental Assistance Program
<b>CSBG</b>	Community Services Block Grant
<b>DOC/Commerce</b>	U.S. Department of Commerce
<b>DOL</b>	U.S. Department of Labor
<b>EBT</b>	Electronic Benefits Transfer
<b>ED</b>	U.S. Department of Education
<b>EDA</b>	Economic Development Administration
<b>EFSP</b>	Emergency Food and Shelter Program
<b>EIDL</b>	Economic Injury Disaster Loan
<b>EPA</b>	U.S. Environmental Protection Agency
<b>ERS</b>	Economic Research Service
<b>ESG</b>	Emergency Solutions Grants
<b>ESSERF</b>	Elementary and Secondary School Emergency Relief Fund
<b>FAQ(s)</b>	Frequently Asked Questions
<b>FCC</b>	Federal Communications Commission
<b>FDA</b>	U.S. Food and Drug Administration
<b>FEMA</b>	Federal Emergency Management Agency
<b>FNS</b>	Food and Nutrition Service

## COVID-19 Food and Nutrition Resource Roadmap

<b>FSA</b>	Farm Service Agency
<b>GEERF</b>	Governor's Emergency Education Relief Fund
<b>HEERF</b>	Higher Education Emergency Relief Fund
<b>HHS</b>	U.S. Department of Health and Human Services
<b>HUD</b>	U.S. Department of Housing and Urban Development
<b>IRS</b>	Internal Revenue Service
<b>NAP</b>	Nutrition Assistance Program
<b>NOAA</b>	National Oceanic and Atmospheric Administration
<b>NRCS</b>	Natural Resources Conservation Service
<b>OSHA</b>	Occupational Safety and Health Administration
<b>PA</b>	Public Assistance
<b>PHE</b>	Public Health Emergency
<b>PPP</b>	Paycheck Protection Program
<b>RD</b>	Rural Development (U.S. Department of Agriculture)
<b>RMA</b>	Risk Management Agency
<b>SBA</b>	U.S. Small Business Administration
<b>SLTT</b>	State, Local, Tribal, and Territorial
<b>SNAP</b>	Supplemental Nutrition Assistance Program
<b>TEFAP</b>	The Emergency Food Assistance Program
<b>Treasury</b>	U.S. Department of the Treasury
<b>USDA</b>	U.S. Department of Agriculture