

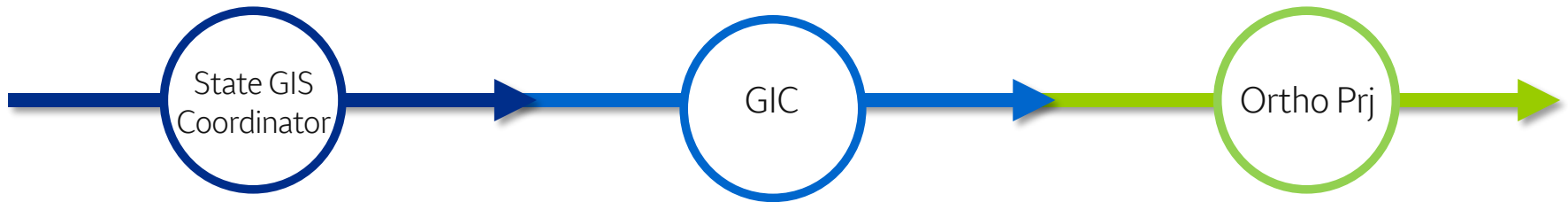


# The SCGIC, RFA and the Statewide Ortho Mapping Program

---

Adam J. DeMars - South Carolina State GIS Coordinator and  
Program Manager for the SC Geographic Information Council

# Overview



## Coordinate

- Minimize Duplication

## Collaborate

- State agencies
- Common goals
- Community

## Cooperate

- Funds
- Big picture (RESOLUTION)
- Promote Participation and Growth
- Emergency preparedness

# What is Coordination

1. The process of organizing people or groups so that they work together properly and well
2. The harmonious functioning of parts for effective results





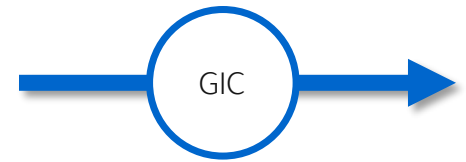
{The following is an excerpt from the report " Recommended Structure for GIS Coordination in South Carolina Feb. 5 1996}

**Relevant Points to Consider for State Wide GIS Coordination:**

**P** - There are great disparities between the GIS data collecting efforts of local governments, the state and the federal government. The basic problem is one of scale and representation. At the local government level the fundamental needs are tax maps that represent property lines and buildings. The scale of these maps are often 1" = 200'. At the state level the needs are more often linked to natural resources which are mapped at a scale of 1" = 2,000'. In a GIS environment these data sources can be combined but it is impossible to map property lines and buildings at statewide scale and it is too expensive to map the state at the local scale. Therefore, there will be disparities for decades.

**S** - The only solution is to have the local governments provide accurate street center lines, and point level representation of buildings to the State data base. The State needs to be a active participant in this process and be prepared to accept these elements on a transaction basis IE. as new subdivisions are completed they are entered into a state wide network. The State should then be a actively cooperate with the Bureau of the Census and Postal Service to share the digital data.

# What is Collaboration



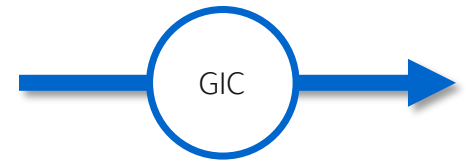
1. To work jointly with others or together especially in an intellectual endeavor
2. To cooperate with an agency or instrumentality with which one is not immediately connected



# What is Cooperation

1. The actions of someone who is being helpful by doing what is wanted or asked for : common effort
  
2. Association of persons for common benefit





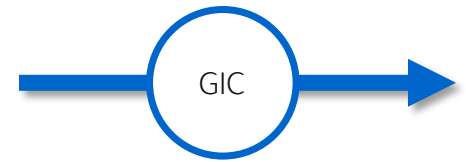
## 1 Stop Shop for Coordination

Identify what roles do each of these key entities play especially in an emergency





# Common Goal



- Allows for new relationships without having to hunt (road closure data or address information for people in a potential flood area due to a hurricane)
- Greatly improves access to other datasets not necessarily directly related to the GIC
- Dependability
- Trust among the group
- Reduce Duplication while minimizing the bottleneck
- Responsible spending of tax payer money



# 1 time funding non-reoccurring

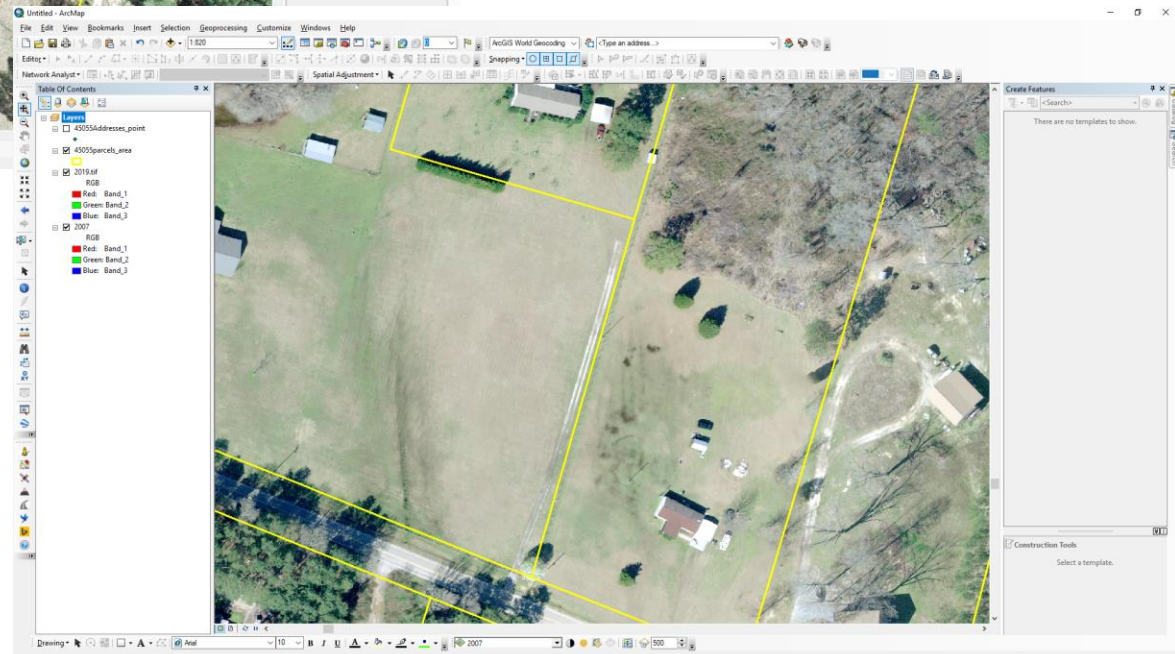
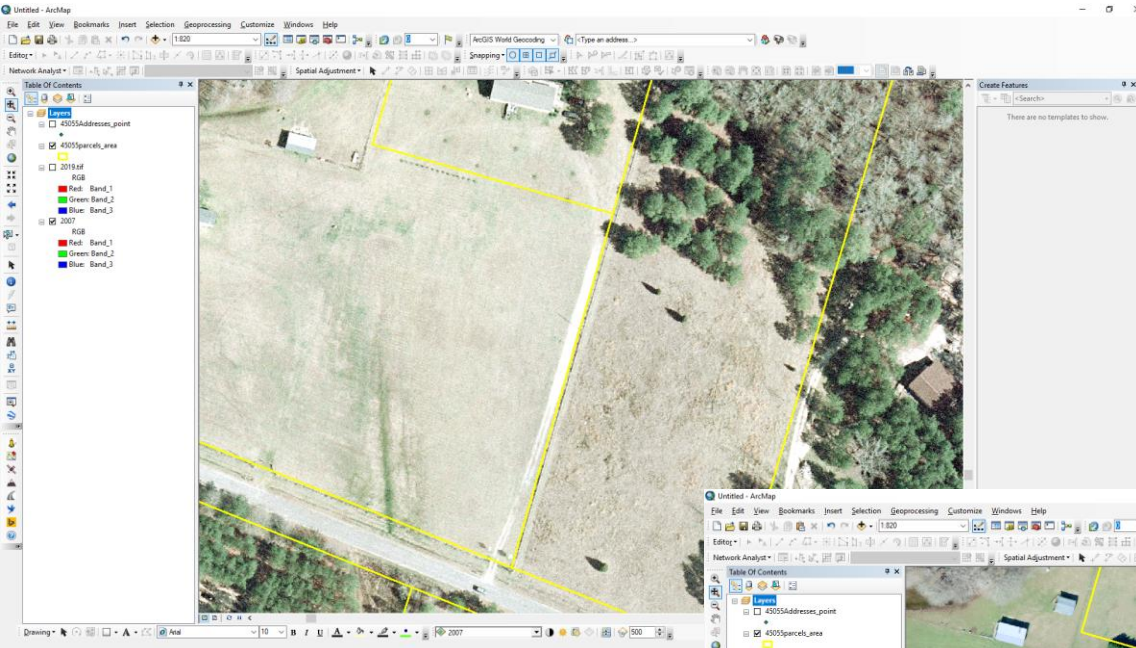


# Resolution – which looks clearer and more detail



## Full State Collection at 6 inch resolution

4 Band (R, G, B,  
NiR)



## Ortho Info



- RFP was published this week (Oct 1)
- Baring any major setbacks, possibility of a signed contract by mid December.
- Flights to be conducted Leaf-off mid Jan 2020 – mid March 2020
  - **Mother Nature we want some assistance please!**
- Possible delivery Quarter 3 of 2020

# Participation & Growth



- Due to 1 time funding, after the initial data collection, we want start a partnership with Local Gov't, other State Gov't, some Federal and others...
- Fulfills every 10 year commitment to map your counties
- Yes, have I heard comments about, “**hey if the state is going to procure this, then I’m going to use my money for something else...**” well, kinda
  - ❖if our 1x non-reoccurring funds run out and we get no additional buy in, then yes, you will still need to start thinking about funding and budgeting for your future mapping.
  - ❖Glass half full says tells me that upper level leadership will want to participate because it would be a cost reduction to pool funding. Additionally, the Local Gov’t would not have to use additional resources to put a RFP/RFQ together, contact negotiations, QA/QC, provided final delivery, Storage for RAW and resample products, etc.

## Participation & Growth continued



- Provided back to who: 911 PSAP's, Assessor Teams, GIS Departments, State Agencies
- Usefulness for a anything from landuse to change detection to supplemental information, to Agriculture to 2020 census snapshot
- Tax payer savings – reducing duplication of data collection and more effective use of

Rough math/Ball park - say the contract was 1,750,000 (full state), second time around

If the we collected 750,000 at the state level, the remainder is \$1 million. If each county pooled collectively not based on geography/total tiles = \$21,739.13/county.



Contact

Adam DeMars

[adam.demars@rfa.sc.gov](mailto:adam.demars@rfa.sc.gov)