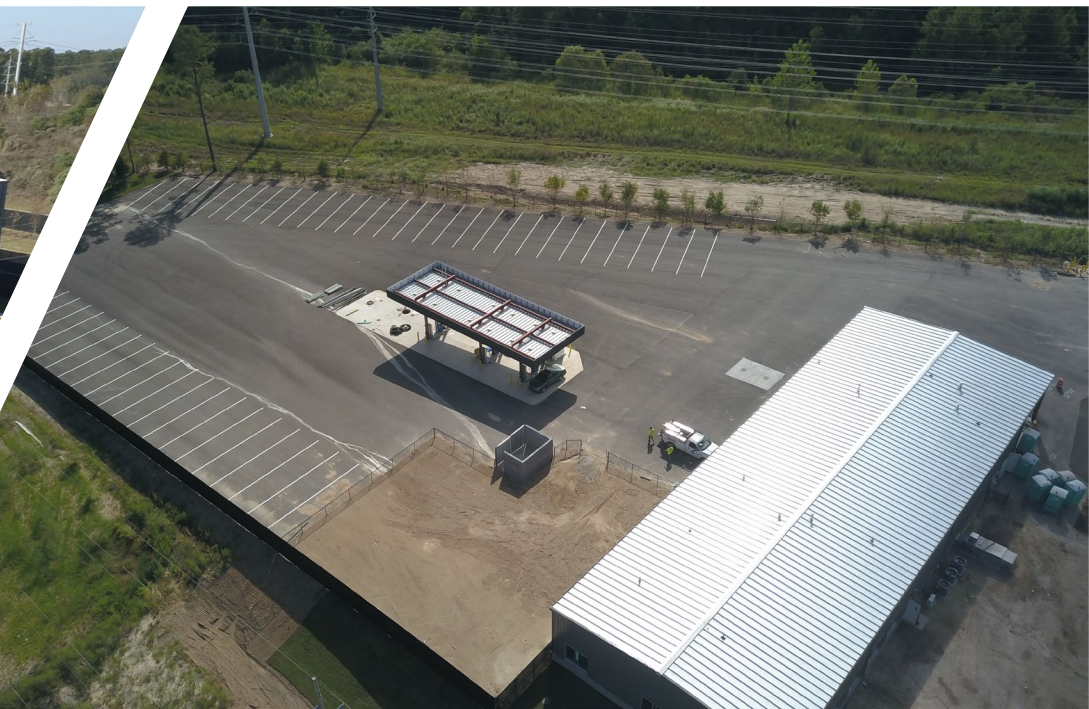




Charleston County Environmental Management





Facility Information

- **Equipment capable of processing 25 tons per hour**
 - **Former MRF processed 4-6 tons per hour**
- **Utilizes artificial intelligence and optical sorters**
- **Capacity has been designed to meet future regional recycling needs**
- **82,000 square foot facility (65,000 sf warehouse / 17,000 sf office building)**



New Collection Program



Elements of a Successful Collections Program

- Curbside and drop site service
- Education and Outreach
- Private vs. Municipal Operation
- Funding

Curbside and drop site service



Education and Outreach



Cart tagging

- Joint efforts between Collections and Programs
- Staff places notification when cart is in violation

Process

- Three notices followed cart removal

Public Education

- Website, social media and marketing materials
- Community groups and HOAs

Recycle Right!

The following items should not have been placed in this cart for recycling. Next time, please **NO**:

- Plastic Bags or Plastic Wrap
- Styrofoam Packaging or Containers
- Electronics or Household Items
- Food Waste or Garbage
- Shredded Paper
- Other: _____

Unfortunately, this cart could not be serviced. Please remove contaminants and dispose properly.

Please **ONLY** recycle items like these:

Flattened Cardboard & Paper	Aluminum & Steel Cans
Plastic Bottles & Containers	Glass Bottles & Jars

recycle.charlestoncounty.org (843) 720-7111

Recycle Right!

The following items should **NOT** have been placed in this cart for recycling. Please remove items and dispose properly before your next service day.

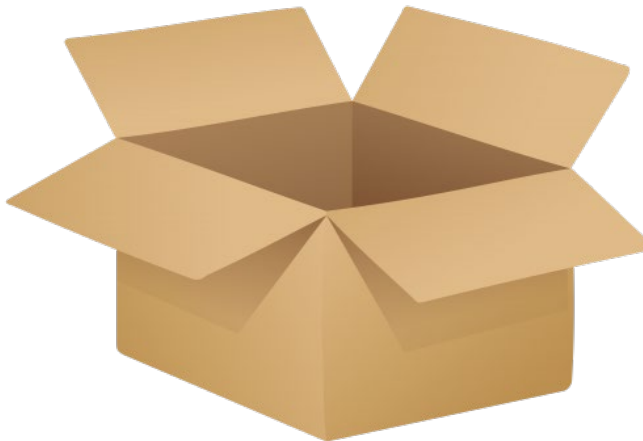
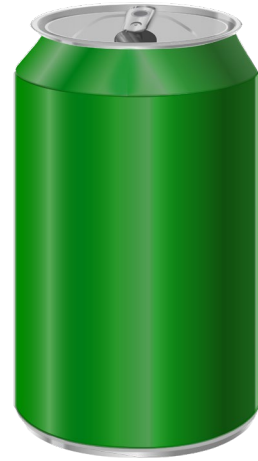
- Plastic Bags or Plastic Wrap
- Styrofoam Packaging or Containers
- Electronics or Household Items
- Food Waste or Garbage
- Shredded Paper
- Other: _____

ONLY place items like these in your recycling cart:

Flattened Cardboard & Paper	Aluminum & Steel Cans
Plastic Bottles & Containers	Glass Bottles & Jars

recycle.charlestoncounty.org (843) 720-7111

Recycle Right – Keep it Simple



Know Your “Nos”

Plastic bags and film – Priority issue

Styrofoam

Shredded paper

Food waste

Electronics

Textiles

Construction debris

Rope-like items

Medical waste





Why is contamination a concern?

Private vs. Municipal Operation



Pros	Cons
Equipment and maintenance	Contract costs – fuel and CPI adjustments
Sale of recyclables	Customer Service – HOT issues
Staffing	Database



NO PLASTIC BAGS
IN RECYCLING

DO NOT BAG

Recyclables

NO Plastic Bags | **NO** Bolsas De Plástico



PLACE ITEMS
LOOSE IN CART

Questions?