

# MAXIMIZING BROADBAND RESOURCES & DEPLOYMENT IN SOUTH CAROLINA

Joe Prater, State Government Affairs

**Charter**  
COMMUNICATIONS

**Spectrum**▶

# OUR NATIONAL IMPACT



**Nearly 450 Million**

IP Devices Connected to Our Network



**53 Million**

Homes Passed in 41 States



**32 Million**

Customer Relationships



**29 Million**

Broadband Internet Customers



**16 Million**

Video Subscribers

**10 Million**

Voice Subscribers

**2.7 Million**

Mobile Lines

over **750,000**

Miles of Network Infrastructure

# ADVANCING ACCESS & IMPROVING ADOPTION

Charter is committed to being part of a comprehensive solution to close the technology divide.

- ▶ To **increase access to broadband**, we have been expanding our network, connecting more than 1.2 million customer locations – about 30% in rural areas – in 2021 alone.
- ▶ To **make broadband more accessible for those in need**, all Spectrum Internet offerings qualify for the FCC's Affordable Connectivity Program. That means eligible households can have internet service at absolutely no cost to them.
- ▶ To **increase adoption and access to technology**, we offer philanthropic support to community organizations that provide computers, digital education classes, and technology labs for thousands across the country.

"The pandemic has prompted new focus on the technology divide and Charter is committed to being part of the comprehensive solution needed to close these gaps."

TOM RUTLEDGE  
CHARTER CHAIRMAN AND CEO



# INVESTING IN OUR WORKFORCE AND THE COMMUNITIES WE SERVE

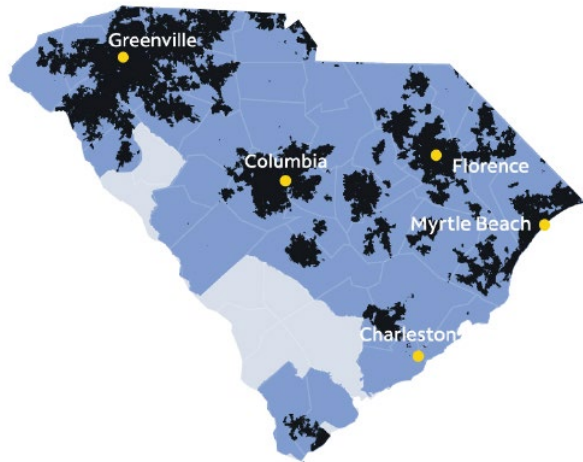
Charter's insourced, U.S.-based workforce includes more than **93,000 highly-skilled employees**, nearly half of whom identify as a person of color and nearly **10% have a military affiliation**. We offer:



- A **\$20 per hour minimum wage** with generous benefits, including medical, life and disability, education and training, and a generous retirement plan.
- A highly-regarded, **Department of Labor-certified Broadband Field Technician Apprenticeship program**.

Through our Spectrum Community Assist program and Spectrum Digital Education grants, Charter will invest more than \$30 million in communities across our 41-state footprint by 2025.

# OUR SOUTH CAROLINA IMPACT



- ▶ **954,000**  
customers served
- ▶ **3,165**  
employees
- ▶ **\$110 million**  
paid in taxes & fees in 2021\*
- ▶ **\$243 million**  
2021 capital investment\*

## SERVING SOUTH CAROLINA

Charter's insourced, U.S.-based workforce includes **3,165 people in South Carolina.**

Our largest employment centers are housed in **West Columbia, Simpsonville, and Greer.**

We serve **153 communities** across the state.

## EXPANDING BROADBAND ACCESS

In 2021 alone, Charter extended its network to reach more than 1.1 million additional homes and small businesses across the country, about 30% in rural areas.

In 2021, Charter extended its network to reach an additional **44,000 homes and small businesses in South Carolina.**

OVER THE PAST

**4 YEARS**

WE'VE EXPANDED OUR NETWORK  
TO REACH AN ADDITIONAL

**4,000,000**  
HOMES & SMALL  
BUSINESSES

ABOUT

**1,000,000**  
IN RURAL AREAS

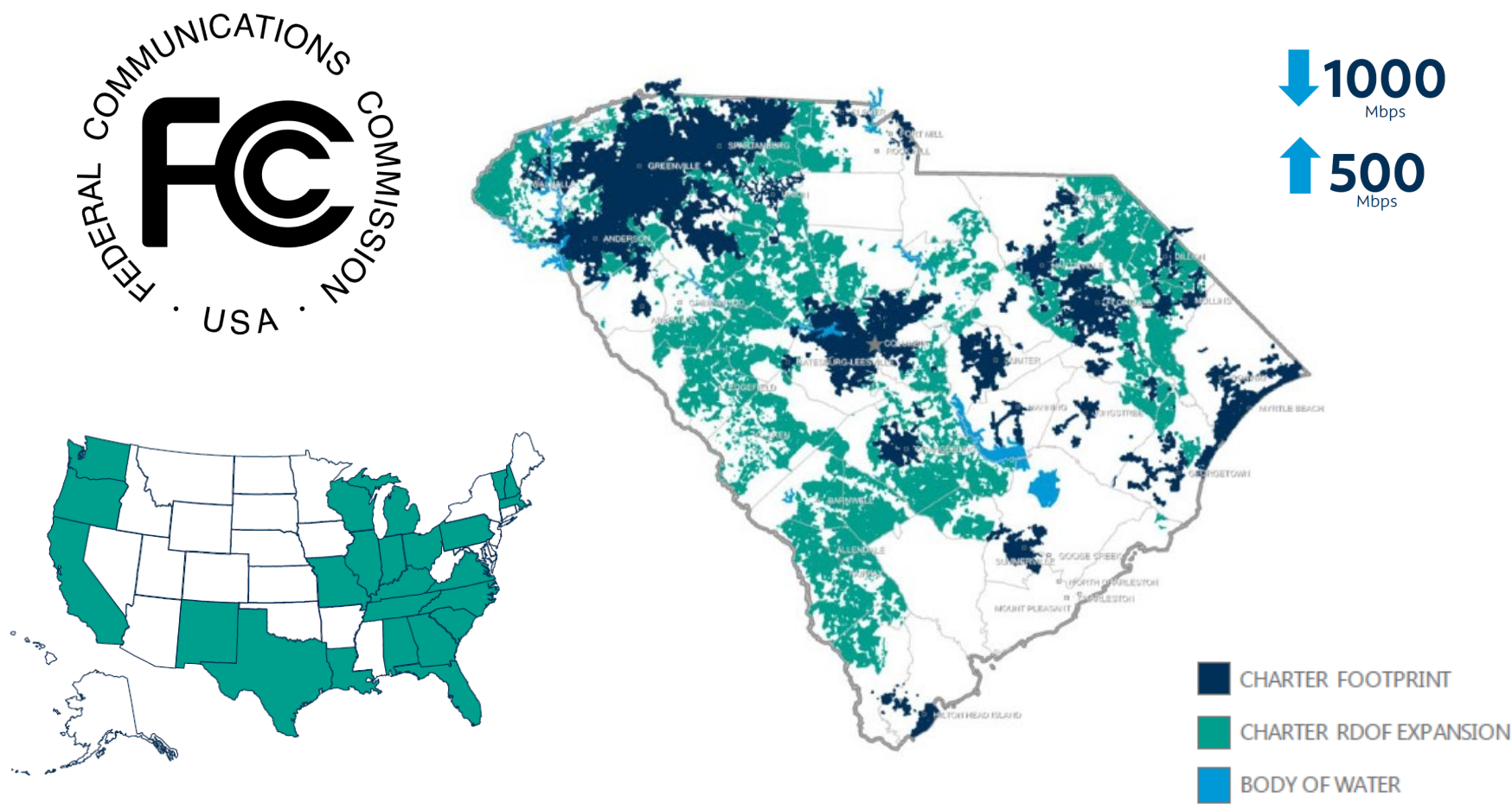
Charter | Spectrum  
COMMUNICATIONS



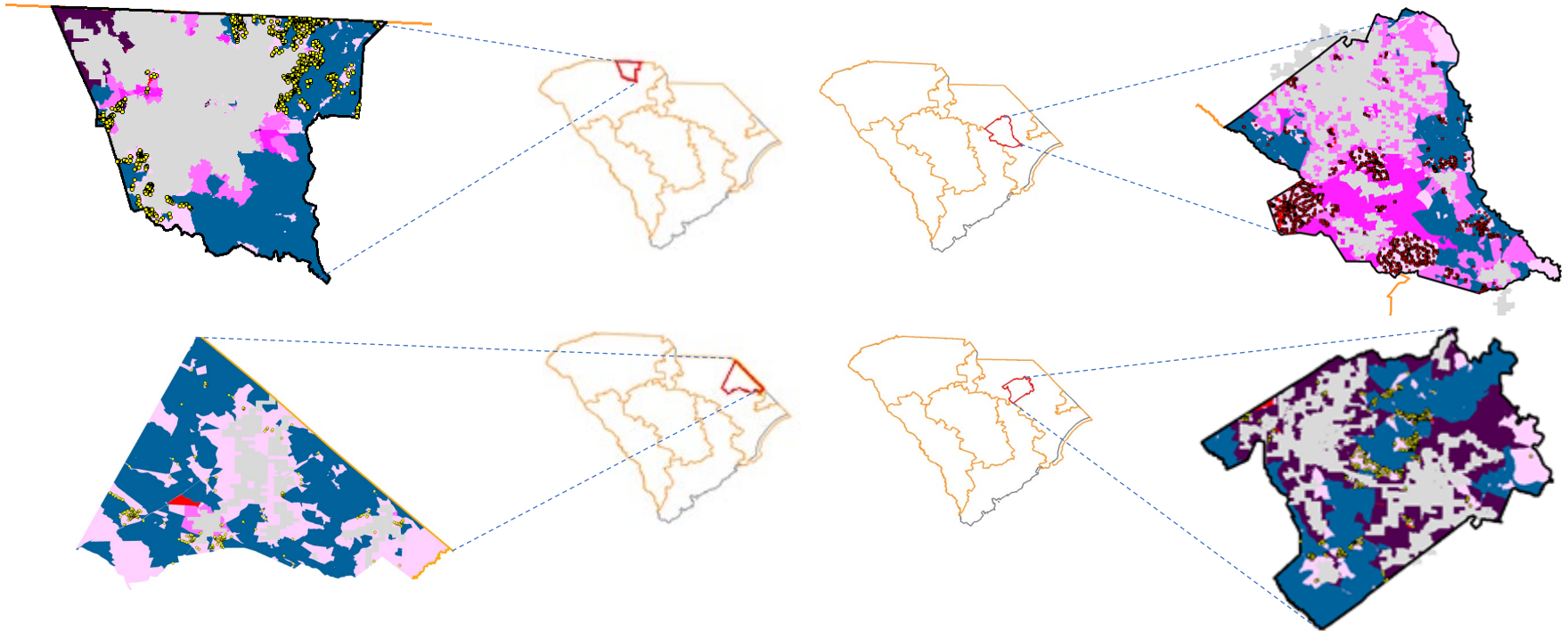
**Best Internet Service  
Provider for Rural Areas**  
Spectrum Internet

Charter | Spectrum  
COMMUNICATIONS

# RURAL DIGITAL OPPORTUNITY FUND (RDOF)



# SOUTH CAROLINA PUBLIC-PRIVATE PARTNERSHIPS





THANK YOU!

Charter  
COMMUNICATIONS