



SC Conservation Bank

J. Raleigh West III

Director

An aerial photograph showing a complex network of winding, light-colored water channels or creeks that meander through a vast, lush green landscape. The terrain appears to be a marsh or wetland, with varying shades of green indicating different vegetation or water levels. The channels are irregular and interconnected, creating a maze-like pattern across the entire frame.

SC Conservation Bank

- Permanent State Agency
- SC Conservation Bank Act 2002
- Board Members: 14
- Staff: 2

An aerial photograph of a scenic landscape in South Carolina. The foreground features several rows of agricultural fields, likely for crops like corn or soybeans, interspersed with dense green forests. A winding road cuts through the middle ground. In the background, a large body of water, possibly a reservoir or lake, is nestled between rolling hills and mountains under a blue sky with scattered white clouds.

Mission Statement

To improve the quality of life in South Carolina through the conservation of significant natural resource lands, wetlands, historical properties, archeological sites, and urban parks.



Quick Stats

- First Grant: 2006
- # Grants: 335
- Awarded: \$171,383,092
- Land Protection: 324,090 acres
- Wetlands: 99,538 acres

A photograph of a forest floor. In the foreground, there are many large, green, five-lobed leaves, likely from a Mayapple plant. In the background, several tall, thin tree trunks are visible, and the forest is filled with dense green foliage. A semi-transparent dark rectangle is overlaid on the center of the image, containing text.

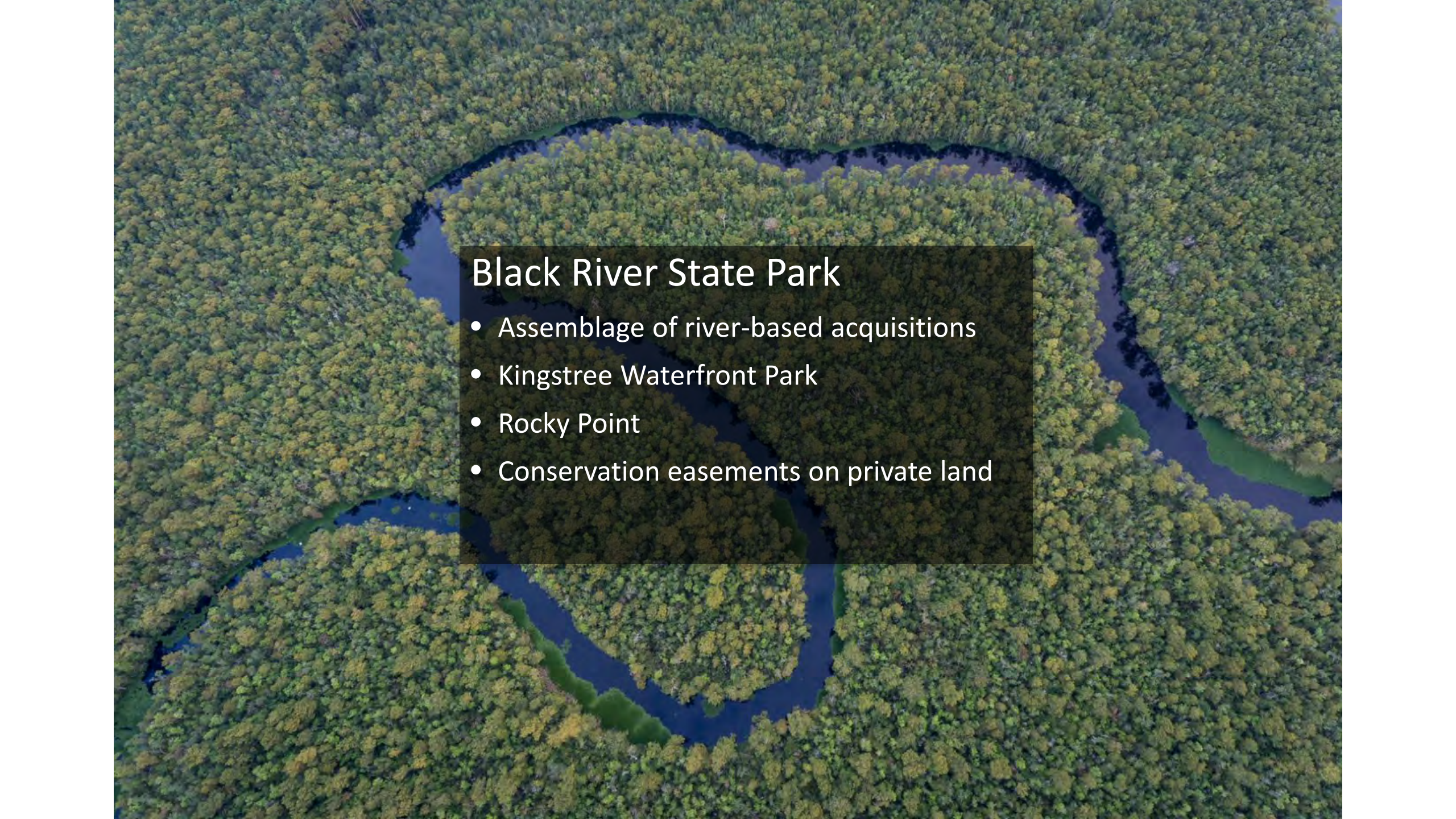
Broad Mandate

- Forests and Farms
- Historic Sites
- Wildlife Habitats
- Water and Wetland Resources
- Scenic Vistas
- Urban Parks
- Public Access



Ashley River Historic District

- 2007 – Assemblage, 12,280 acres
- 2007-08 – Middleton Place, 5,771 acres
- 2021 – The Oaks, 194 acres
- Many projects in associated tributaries
 - Cypress Swamp
 - Four Holes Swamp

An aerial photograph showing a dark, winding river flowing through a vast, dense forest. The trees are mostly green with some yellowing, suggesting an autumn or early spring setting. The river meanders through the landscape, creating a central focus for the image.

Black River State Park

- Assemblage of river-based acquisitions
- Kingstree Waterfront Park
- Rocky Point
- Conservation easements on private land



Blue Ridge Escarpment

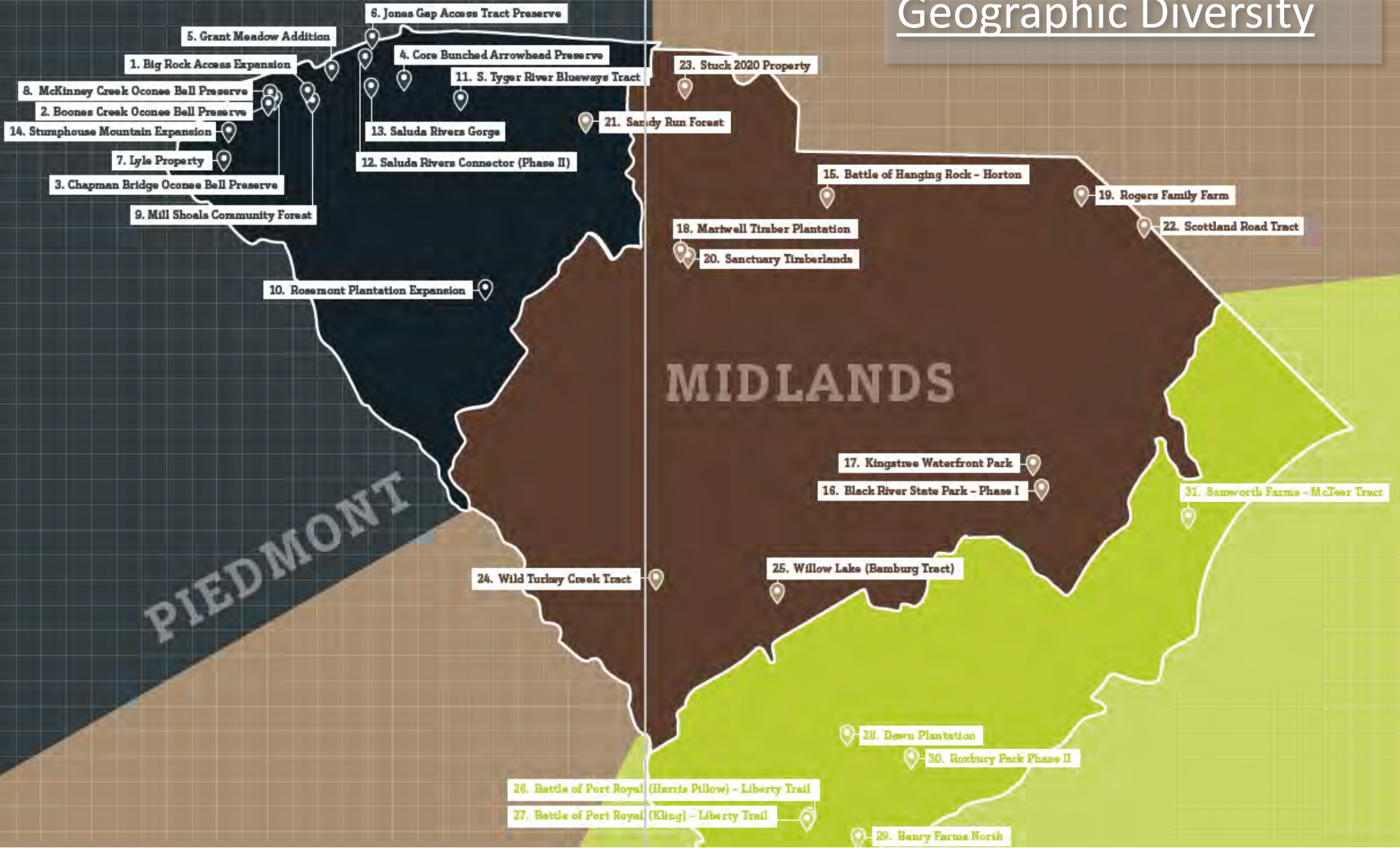
- 100,000-acre Focus Area in Upstate
- Jocassee Gorges
- Mountain Bridge Wilderness Area
- Jones Gap State Park
- Cherokee Foothills National Scenic Byway

Liberty Trail

- Series of Revolutionary War Battlefields
- Battle of Camden
- Fort Fair Lawn
- Battle of Port Royal
- Battle of Hanging Rock
- Parker's Ferry



Geographic Diversity

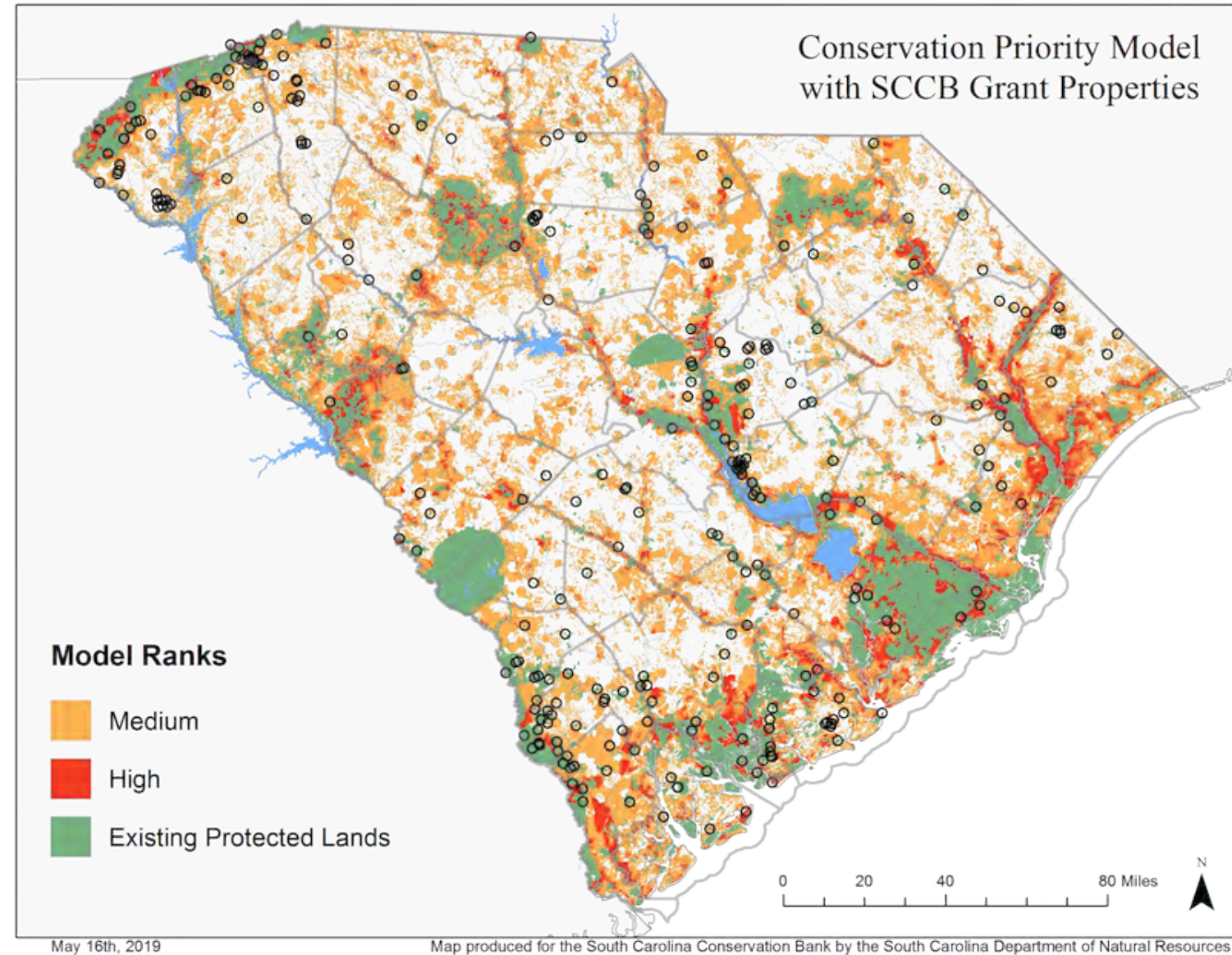


Competitive Grants

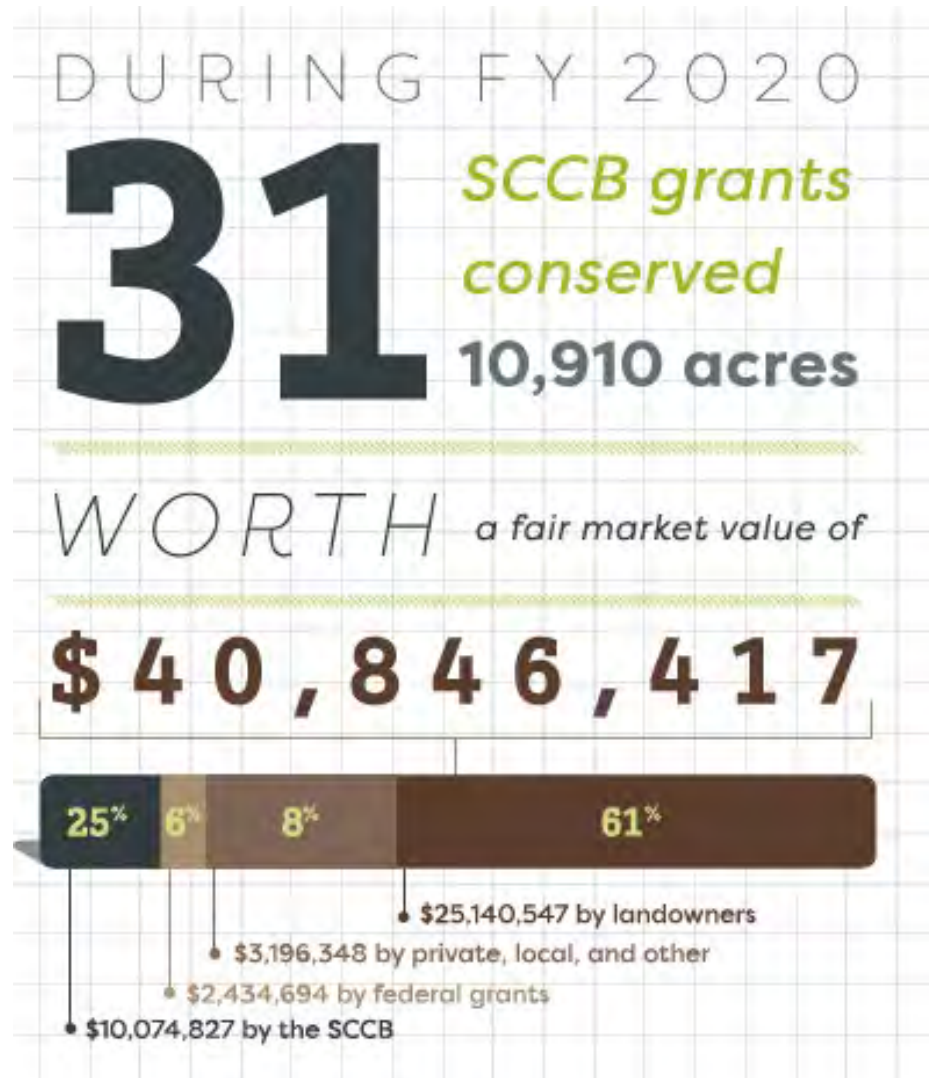
- Objective Conservation Criteria
- Financial Leverage
- Unique Project Features
 - Public Access
 - Diversity of Partnerships
 - Threat of Conversion



Statewide Conservation Map



Financial Leverage



An aerial photograph of a river with several yellow kayakers. The river is dark and reflects the surrounding green forest. A semi-transparent grey box is overlaid on the upper part of the image, containing text. The text is white and includes a title and a bulleted list of conservation programs.

Local Leverage = More Competitive Grants

- County Conservation Programs
 - Beaufort Rural and Critical Lands Program
 - Charleston County Greenbelt
 - York County Forever
 - Oconee Conservation Bank
 - Dorchester County Conservation Commission
 - Greenville County Historic and Natural Resources Trust (New)
 - Others?



Impact of Local Funding

- Boone Hall
- Financials
 - Total Value: \$21.0
 - Landowner Donation: \$14.0
 - Purchase Price: \$ 7.0
 - County Greenbelt: \$ 5.0
 - SC Conservation Bank \$ 2.0